

SECUREFOLD 50

HENDERSON

50kg Wood Interior Exterior Aluminium

The ultimate folding door hardware solution for doors weighing up to 50kg

Overview

Securefold 50 is the ultimate folding door system for exterior, wooden or aluminium doors weighing up to 50kg. Designed for residential and commercial applications, Securefold operates with effortless ease and comes with the additional advantage of uncompromised security and durability.

The system has been designed to cater for inward and outward opening, various door configurations and both locking and non locking options. Available in a range of stunning finishes, including satin, chrome and black, Securefold can complement virtually any colour scheme.

This system can be enhanced even further with our Twinbolt locking system. One simple turn of a handle engages a 22mm throw to securely lock the doors at the top and bottom of the system.



Features and Benefits

- Ideal for external applications - all components are made from marine grade 316 stainless steel
- Available in 3 stunning finishes - satin, black and chrome
- Caters for both inward and outward opening applications
- Available with Twinbolt - a locking system which provides two points of locking using top and bottom throw rods

Product Information

Product	Max. Door Height	Max. Door Width	Door Thickness Range*	Max. Door Weight
Securefold 50	3300mm	1000mm	35 - 68mm	50kg

* For thick and/or narrow width doors please consult our fitting instructions regarding 'camming'. For doors between 35 - 47mm use an alternative flushbolt.

Product Specification

Component	Description	Mortice	Mortice Squared	Non Mortice
Track	Anodised aluminium track - 2000, 2500, 3000, 3500, 4000, 5000 and 6000mm lengths	180/****		
Pivot	Pivot assembly	SF1#50	SFM1#50	SFW1#50
Hangers	End hanger set, left hand	SF2L#50	SFM2L#50	SFW2L#50
	End hanger set, right hand	SF2R#50	SFM2R#50	SFW2R#50
	Intermediate hanger set kit	SF4#50	SFM4#50	SFW4#50
	End hanger rebated meeting kit	SF8#50	SFM8#50	SFW8#50
Hinges	Hinge handle set inward opening	SF3#	SFM3#	SF3#
	Hinge set inward opening	SF5#	SFM5#	SF5#
	Hinge set offset inward opening	SF6#	SFM6#	SF6#
	Hinge handle offset outward opening	SF7#	SFM7#	SF7#
	Intermediate pivot hinge	SF9#	SFM9#*	SFW9#50
Threshold	Aluminium threshold in satin with endcaps - 2000, 2500, 3000, 3500, 4000 and 6000mm lengths	SF94T/****		
	Aluminium threshold in bronze with endcaps - 2000, 2500, 3000, 3500, 4000 and 6000mm lengths	SF94T/****BZ		
	Threshold jamb kit	SF94T/JAMB		
Channel	Polypropylene channel in black - 2000, 2500, 3000, 3500, 4000, 5000 and 6000mm lengthsP	94P/****		
	Anodised aluminium support channel - 2000, 2500, 3000, 3500, 4000, 5000 and 6000mm lengths	94SC/****		
Seals	Door perimeter seal in brown or white	AQ63B or AQ63W		
	Frame perimeter seal in brown or white	AQ21B or AQ21W		
	Track seal in black	BS10B		
Twinbolt	Locking system for Securefold	TB/SF	TB/SFM	TB/SF
Flush Bolt - Locking	For outward opening - 190, 450 or 600mm lengths	SF190L# / SF450L# / SF600L#**		
	For inward opening - 190mm length	SF190IBL#		
Flush Bolt - Non Locking	For outward opening - 190, 450 or 600mm lengths for top or bottom of door	SF190# / SF450# / SF600#		
	For inward opening - 190mm length for bottom of door	SF190IB#		
	For inward opening - 190, 450 and 600mm lengths for top of door	SF190IT# / SF450IT# / SF600IT#		
Handle	Handle for Securefold	SF10#		

**** Replace with length of track for full short code

Replace the first letter of required colour for full short code - black, satin or chrome

* satin or black only

** SF600L is only available in satin and black

Securefold Specifier

Use our online specifier tool to quickly build a bill of materials or get a quotation at www.pchenderson.com/securefold-specifier

Diagram 2

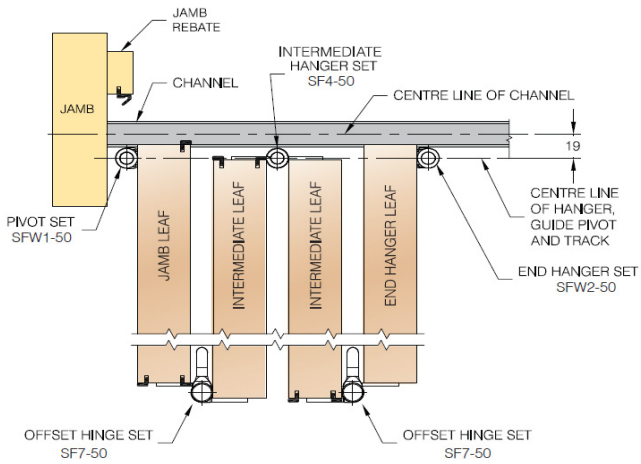


Diagram 3

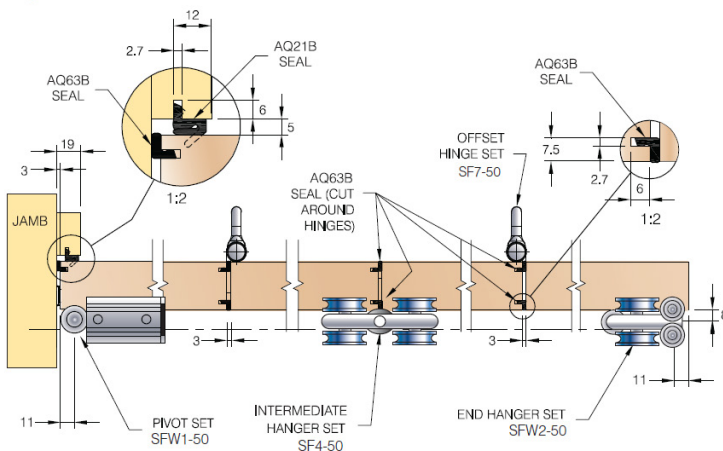


Diagram 4

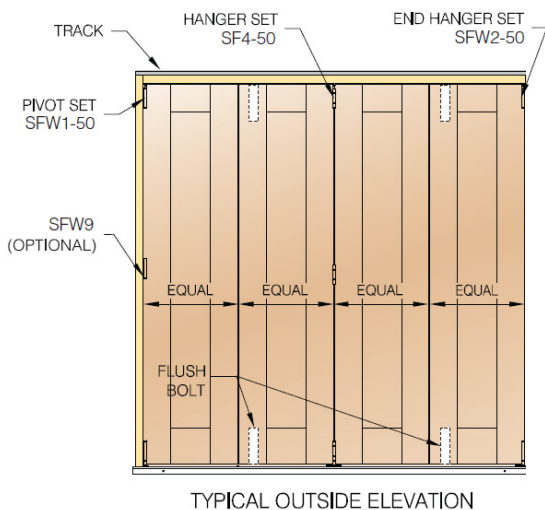
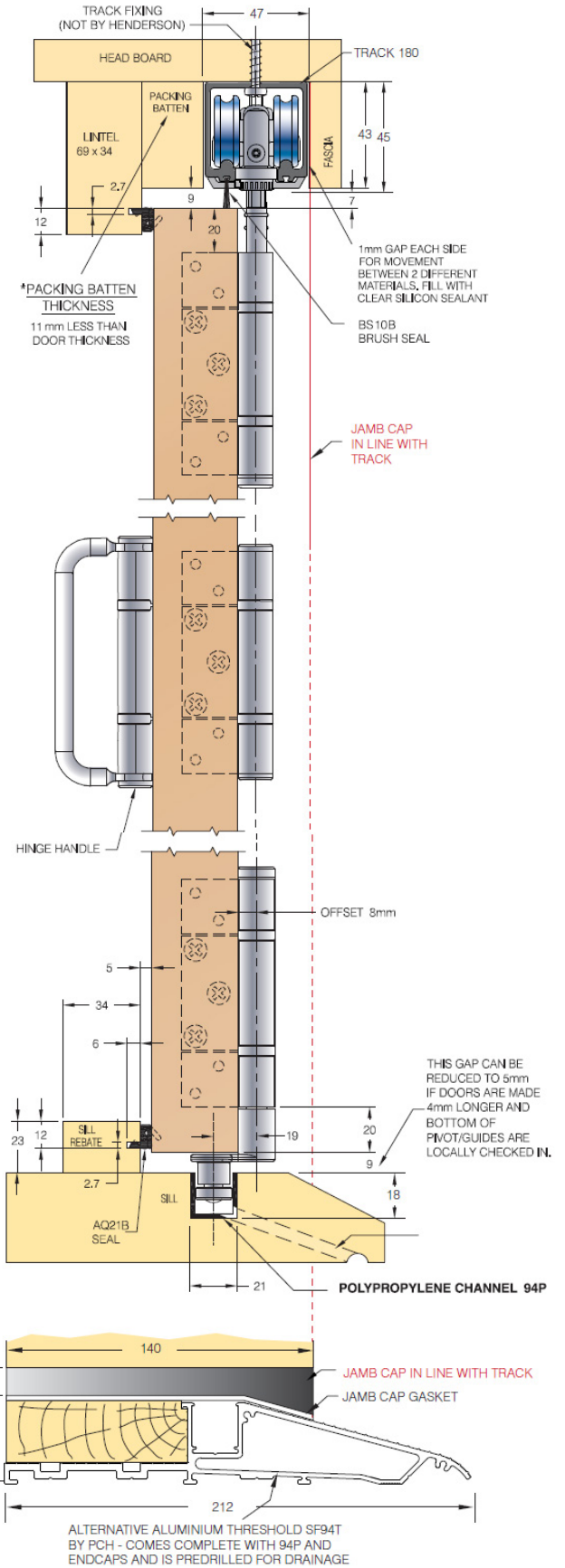


Diagram 1



For further information, please contact us on:

UK Sales

T: +44 (0) 191 377 7345

E: sales@pchenderson.com

W: www.pchenderson.com

Export Sales

T: +44 (0) 191 377 7346

E: international@pchenderson.com

W: export.pchenderson.com